

## NAVIGATION ADVISORY NOTICE



### RIVER GREAT OUSE

---

**DATE:** 04 April 2024 until rescinded

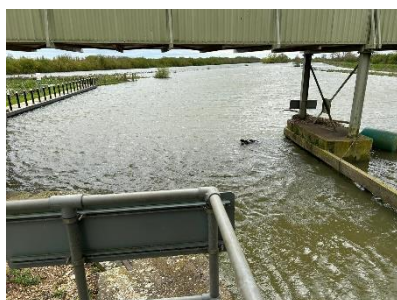
---

**LOCATION:** Brownhill Lock

---

#### DETAILS:

Please be aware of a log in navigation when accessing Brownhill Lock.



We will look at removal as soon as it is safe and practical to do so. In the meantime, if navigating in this area, please do so with caution.

For further information, please contact the Environment Agency on 03708 506506 between 9am and 5pm Monday to Friday and ask for the Great Ouse Waterways team.

**Katherine Briscoombe**

**Waterways Manager**

**04 April 2024**

customer service line  
03708 506 506

incident hotline  
0800 80 70 60

floodline  
0345 988 1188  
0845 988 1188

[www.environment-agency.gov.uk/](http://www.environment-agency.gov.uk/) [www.visitanglianwaterways.org](http://www.visitanglianwaterways.org)